

# TONBRIDGE MEMORIAL GARDENS TRUST

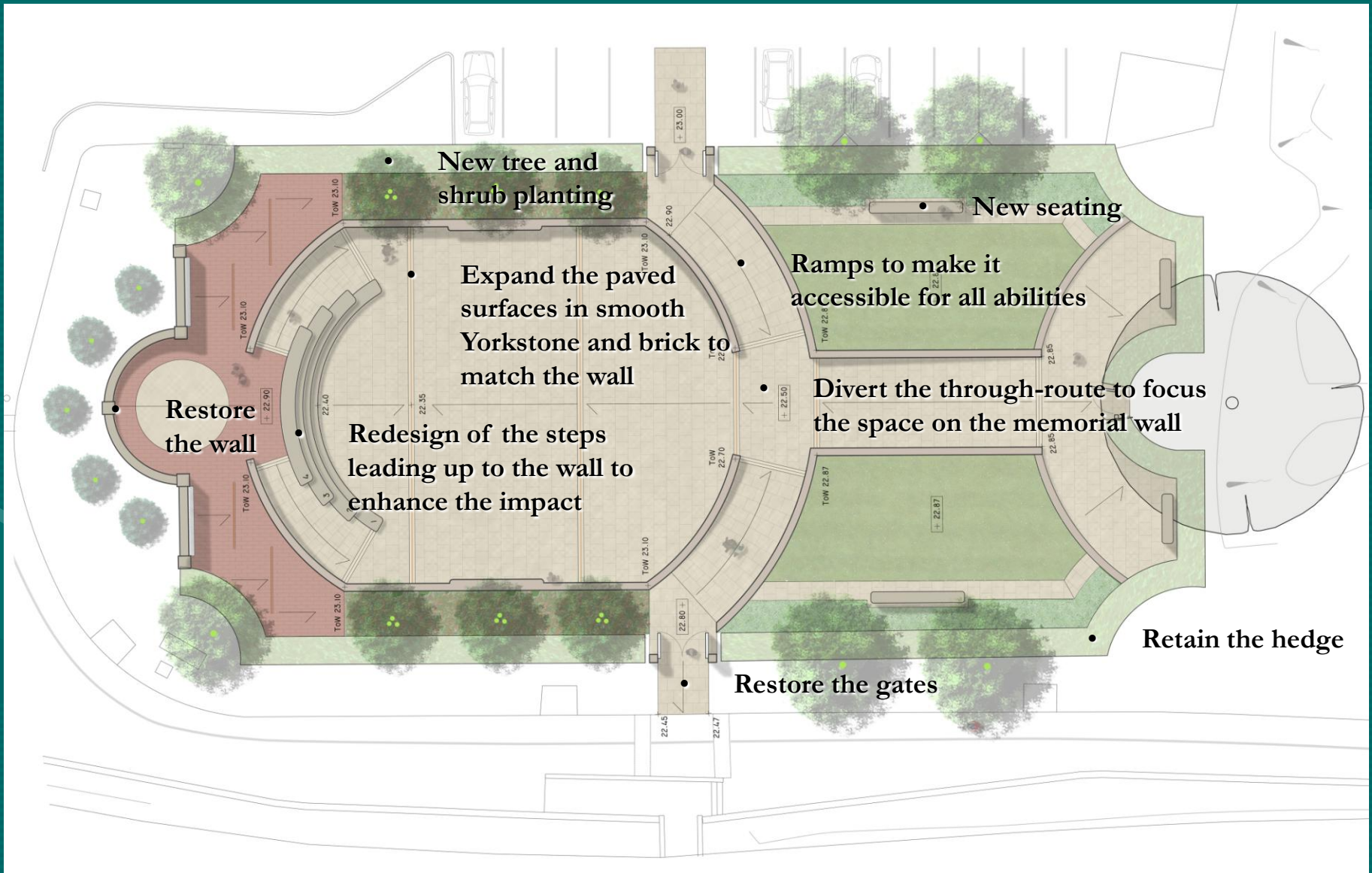


# The Issues

- Diminishing sense of identity of the garden as a memorial.
- Deteriorating condition of the important elements, e.g. the memorial wall, the paving and the planting.
- Restricted disabled access due to change in levels and surfaces.
- Insufficient areas of paving to stand during ceremonies.
- Lack of visual interest and dominance of adjoining uses.



# The Scheme



• New tree and shrub planting

• New seating

• Ramps to make it accessible for all abilities

• Divert the through-route to focus the space on the memorial wall

• Retain the hedge

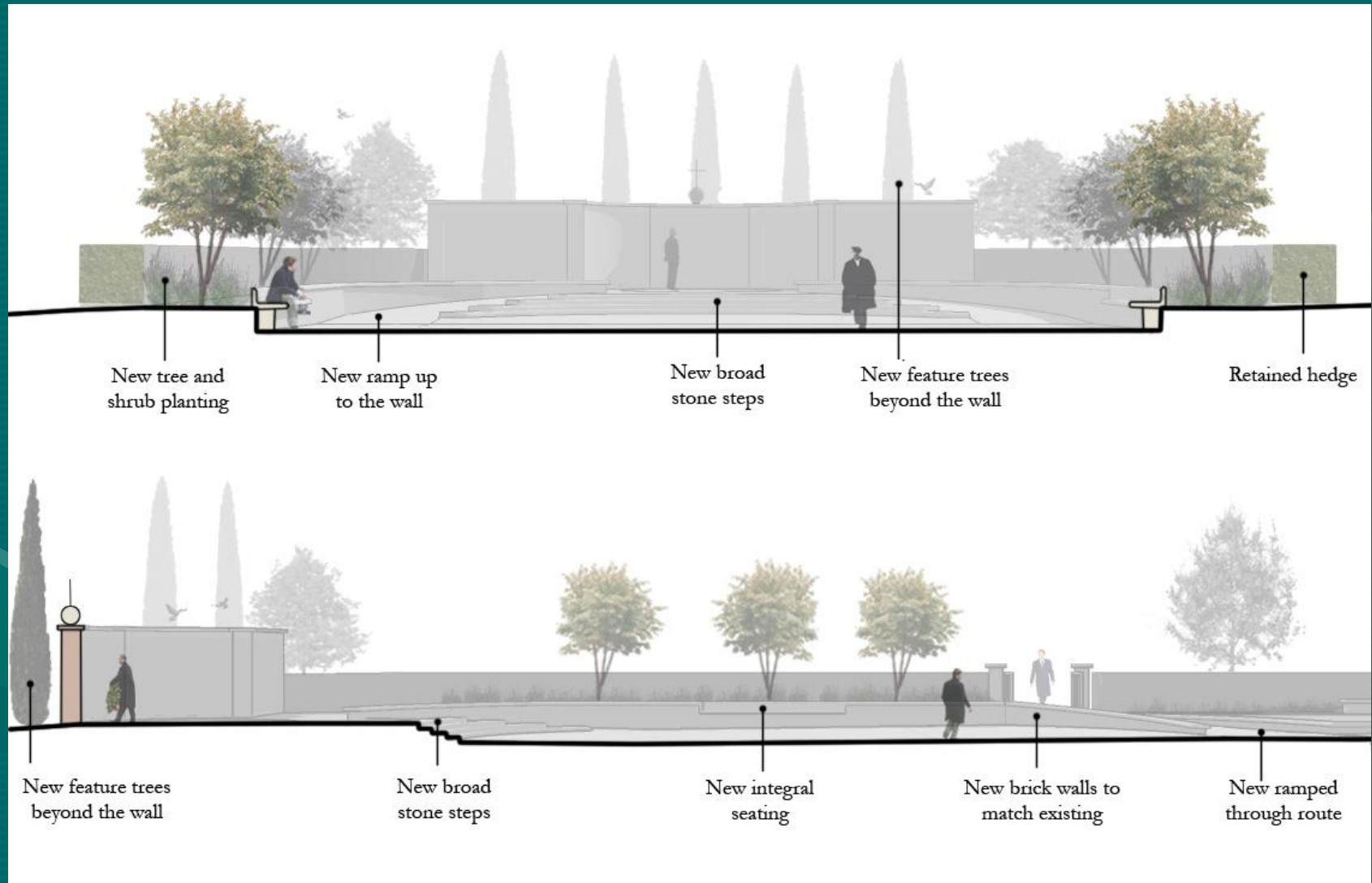
• Expand the paved surfaces in smooth Yorkstone and brick to match the wall

• Redesign of the steps leading up to the wall to enhance the impact

• Restore the wall

• Restore the gates

# How the change in levels will work



# How much will it cost?

• Demolition and Groundwork	£17,000
• Drainage and Services	£10,000
• Walls, Steps and Edgings	£35,000
• Hard Surfaces	£70,000
• Street Furniture	£7,500
• Memorial Restoration	£8,000
• Planting	£27,500
• One Year's Defects and Maintenance	£8,000
• Less sale of existing Yorkstone paving	£12,500 +
<b>Sub-total</b>	<b><u>£170,000</u></b>
• Plus Contractor's Preliminaries	£10,000
• Plus Design and Tender Contingency	£35,000
• Plus Profession Fees	£35,000
<b>Total</b>	<b><u>£250,000</u></b>

# How it will look

